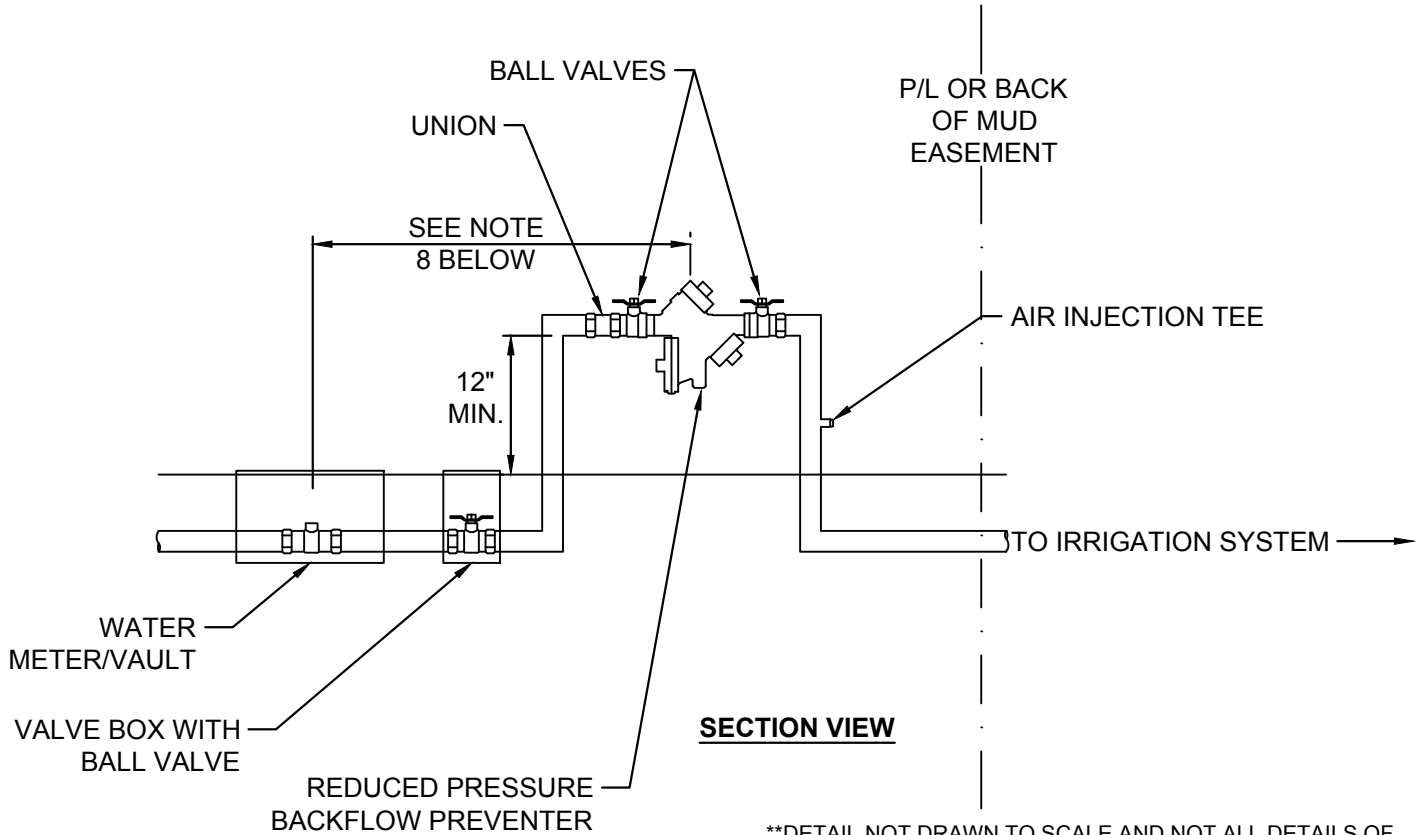


PLAN VIEW



SECTION VIEW

**DETAIL NOT DRAWN TO SCALE AND NOT ALL DETAILS OF ASSEMBLY ARE SHOWN AS THE DETAIL IS FOR GRAPHICAL PURPOSES ONLY TO SHOW INTENT OF INSTALLATION.

NOTES

1. BACKFLOW PREVENTION ASSEMBLY SHALL BE A REDUCED PRESSURE ASSEMBLY TYPE WITH THE MODEL BEING APPROVED BY THE TENNESSEE DEPARTMENT OF ENVIRONMENT AND CONSERVATION DIVISION OF WATER SUPPLY.
2. BACKFLOW PREVENTION ASSEMBLIES SHALL HAVE APPROVED SHUTOFF VALVES.
3. BACKFLOW PREVENTION ASSEMBLIES SHALL BE INSTALLED IN A MANNER SO TESTING AND REPAIRS CAN BE PERFORMED. CLEARANCES OF A MINIMUM OF 12" ON ALL NON-TESTING SIDES, 36" ON TESTING SIDE FROM OBJECTS INCLUDING BUT NOT LIMITED TO SHRUBBERY, ELECTRIC TRANSFORMERS, AND PHONE AND CABLE PEDESTALS. ASSEMBLIES SHALL BE INSTALLED AT A HEIGHT OF 12" MINIMUM FROM GROUND ELEVATION.
4. BACKFLOW PREVENTION ASSEMBLIES SHALL NOT HAVE ANY TYPE OF ELECTRIC CONTROL VALVE INSTALLED BETWEEN THE MAIN WATER SUPPLY LINE AND THE BACKFLOW PREVENTION ASSEMBLY.
5. BACKFLOW PREVENTION ASSEMBLIES SHALL BE INSTALLED IN A HORIZONTAL POSITION, UNLESS WRITTEN APPROVAL IS OBTAINED FROM THE DISTRICT FOR VERTICAL INSTALLATION.
6. THERE SHALL NOT BE ANY BYPASS IN PLUMBING SYSTEM INSTALLED AROUND BACKFLOW PREVENTION ASSEMBLIES.
7. BACKFLOW PREVENTION ASSEMBLIES SHALL BE INSTALLED WITH TEST COCKS AND 1/4 INCH FLARE FITTINGS FOR TESTING.
8. BACKFLOW PREVENTION ASSEMBLIES FOR IRRIGATION SYSTEMS SHALL BE INSTALLED AT A DISTANCE NO GREATER THAN 5' FROM MUD WATER METER BEING WITHIN UTILITY EASEMENT OR ROAD RIGHT OF WAY.
9. WHEN INSTALLING AN IRRIGATION SYSTEM ON A POTABLE WATER LINE CONNECTION, A TEE MUST BE INSTALLED AFTER THE METER WITH AN ISOLATION VALVE PRIOR TO THE BACKFLOW PREVENTION ASSEMBLY TO SEPARATE THE IRRIGATION SYSTEM FROM THE DOMESTIC SUPPLY TO THE HOUSE.

BACKFLOW PREVENTER REQUIREMENTS FOR IRRIGATION SYSTEMS

MILCROFTON UTILITY DISTRICT STANDARD DETAIL NO. 16

ISSUE DATE : JANUARY 2020	DRAWN BY :	BPH
SCALE : NOT TO SCALE	CHECKED BY :	MWB



P.O. BOX 848
FRANKLIN, TN 37065
615.406.3415 / WWW.M2GROUPLLC.COM

BACKFLOW PREVENTER.DWG / Thursday, January 23, 2020 10:26:13 AM